

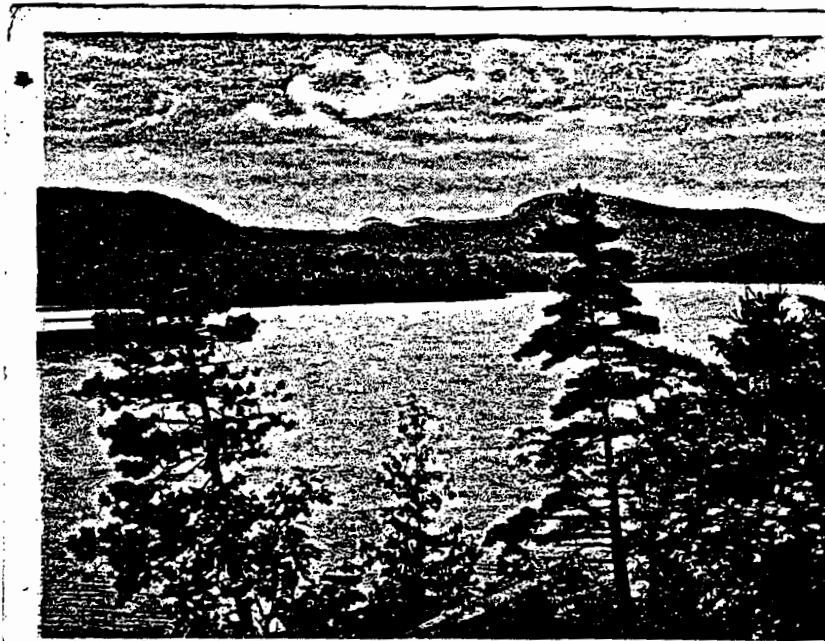
Extract from
Report of Engineer Sutar
to
Department of Water Supply & Control
on
Application of Village of Neondewga
for Permission to use waters of
Gooseneck & Rock Ponds.

Page 7.

" The objectors in these
" proceedings are Property owners
" on Eagle Lake (Chilson Lake) a
" body of water which drains in
" a westerly direction into
" Schron Lake watershed.
Although they do not object to the
development of an adequate
source of water supply for
Neondewga and although
they wish to be supplied with
water from the proposed
supply conduit, which is to
pass along the improved
highway on the south shore
of the lake, they feel that the
diversion of practically the
entire flow from Gooseneck
Pond may lower the level

"of Eagle Lake and thereby"
 "injure their property."

Examination of such data
 as is available to us shows
 that Gooseneck Pond is
 tributary to Eagle Lake
 and that it has a drainage
 area of approximately one
 fifth of the total area now
 tributary to that lake."



LOOKING SOUTHWEST FROM NORTH SHORE, EAGLE LAKE, N. Y.

PHAROAH MT.
 2557 FT.
 IN DISTANCE

PEAKED HILL
 IN CENTER
 1916

POTTER MT.
 1892 FT.
 LONG SLOPE AT
 FOOT OF LAKE

EAGLE OR
 CHILSON LAKE
 951 FT.
 LENGTH $2\frac{1}{2}$ MILES
 WIDTH $\frac{1}{2}$ MILES